

Luxación de rótula bilateral, de grado IV

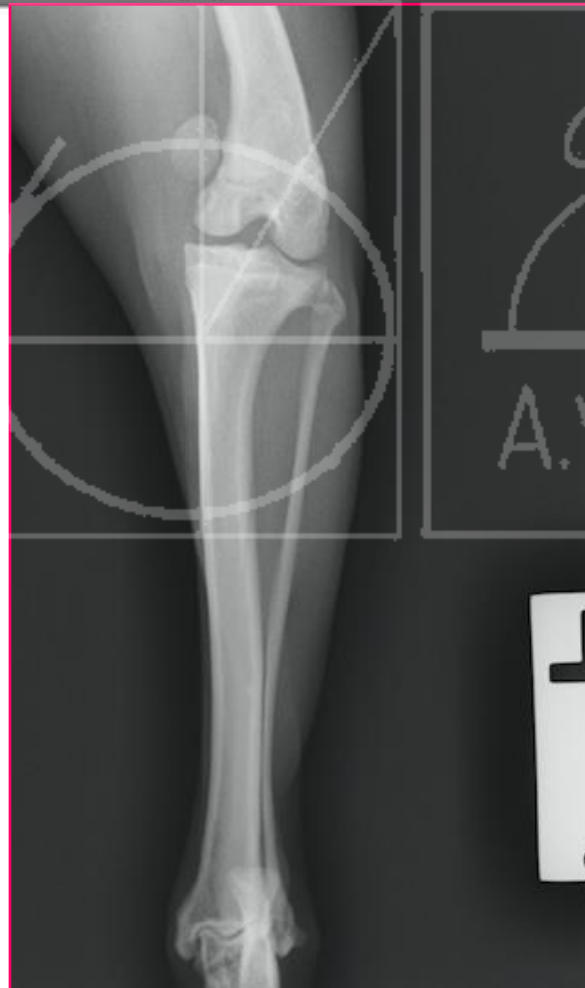
**HACHIKO,
Shiba Inu,
Macho,
11 meses de edad**



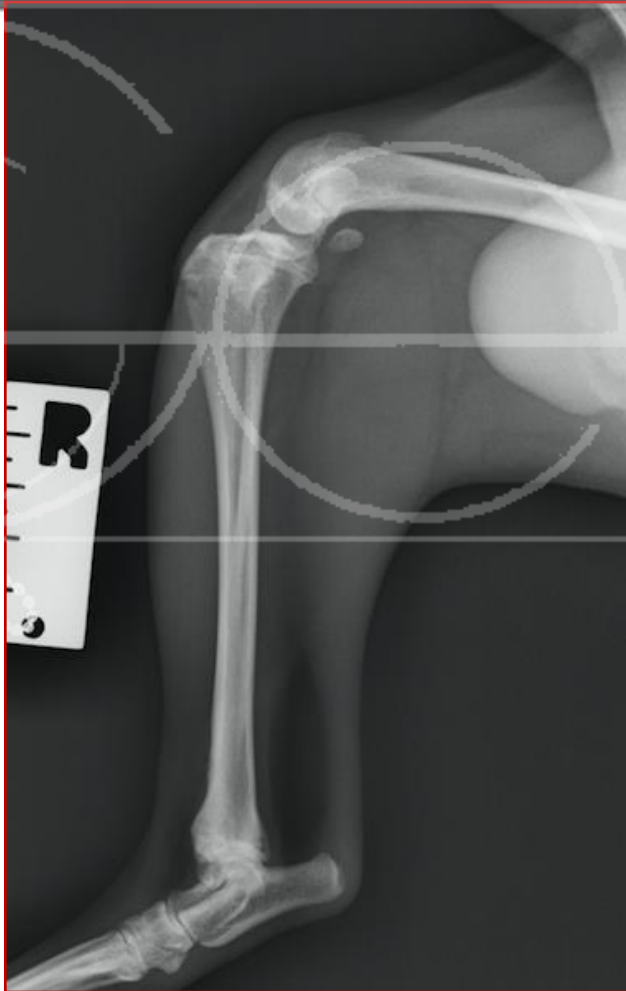
HACHIKO, SHIBA INU, 11 MESES



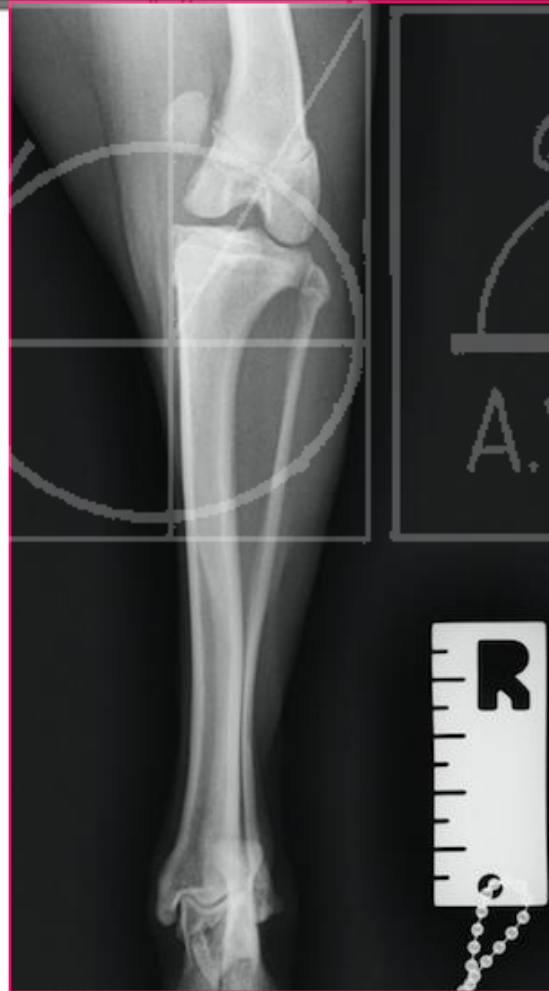
Pre CX



HACHIKO, SHIBA INU, 11 MESES



Pre CX



HACHIKO, SHIBA INU, 11 MESES



Pre CX



CALCULOS PRE CX

1- **Calcular aLDFA (anatomic lateral distal femoral angle)**



CALCULOS PRE CX

- 1- Calcular aLDFA
- 2- **Calcular el aLDFA fisiológico**



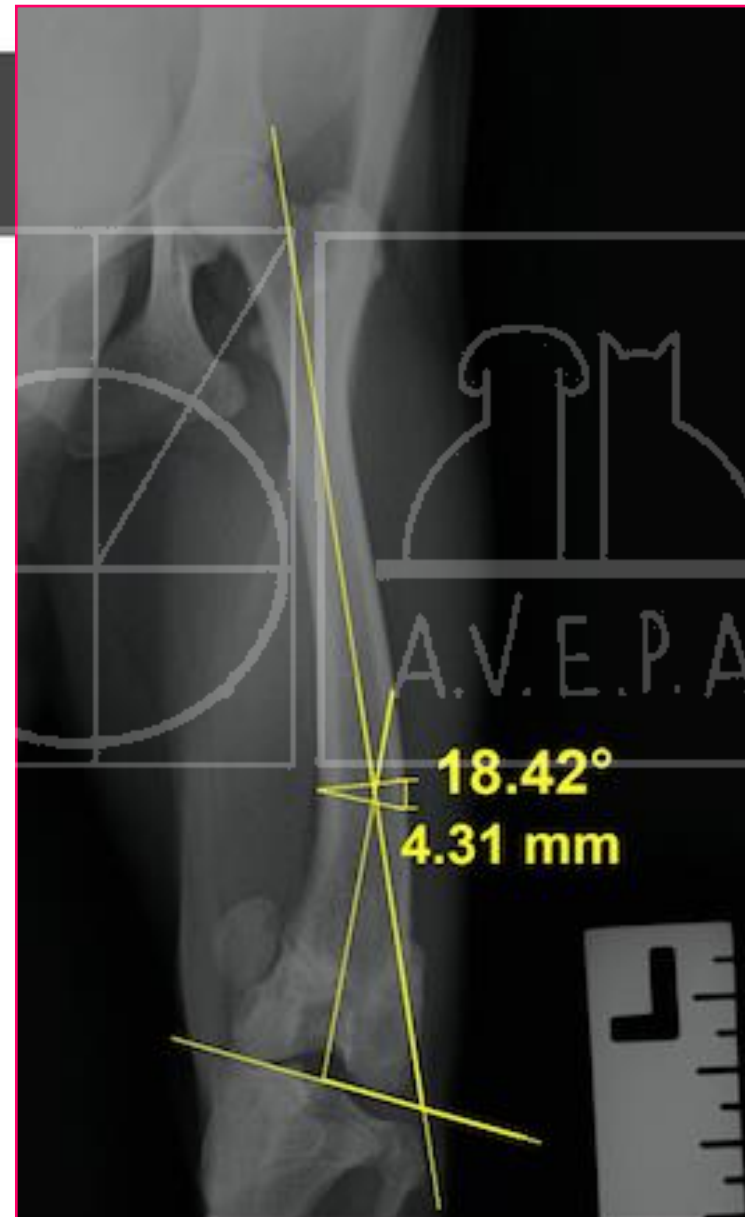
CALCULOS PRE CX

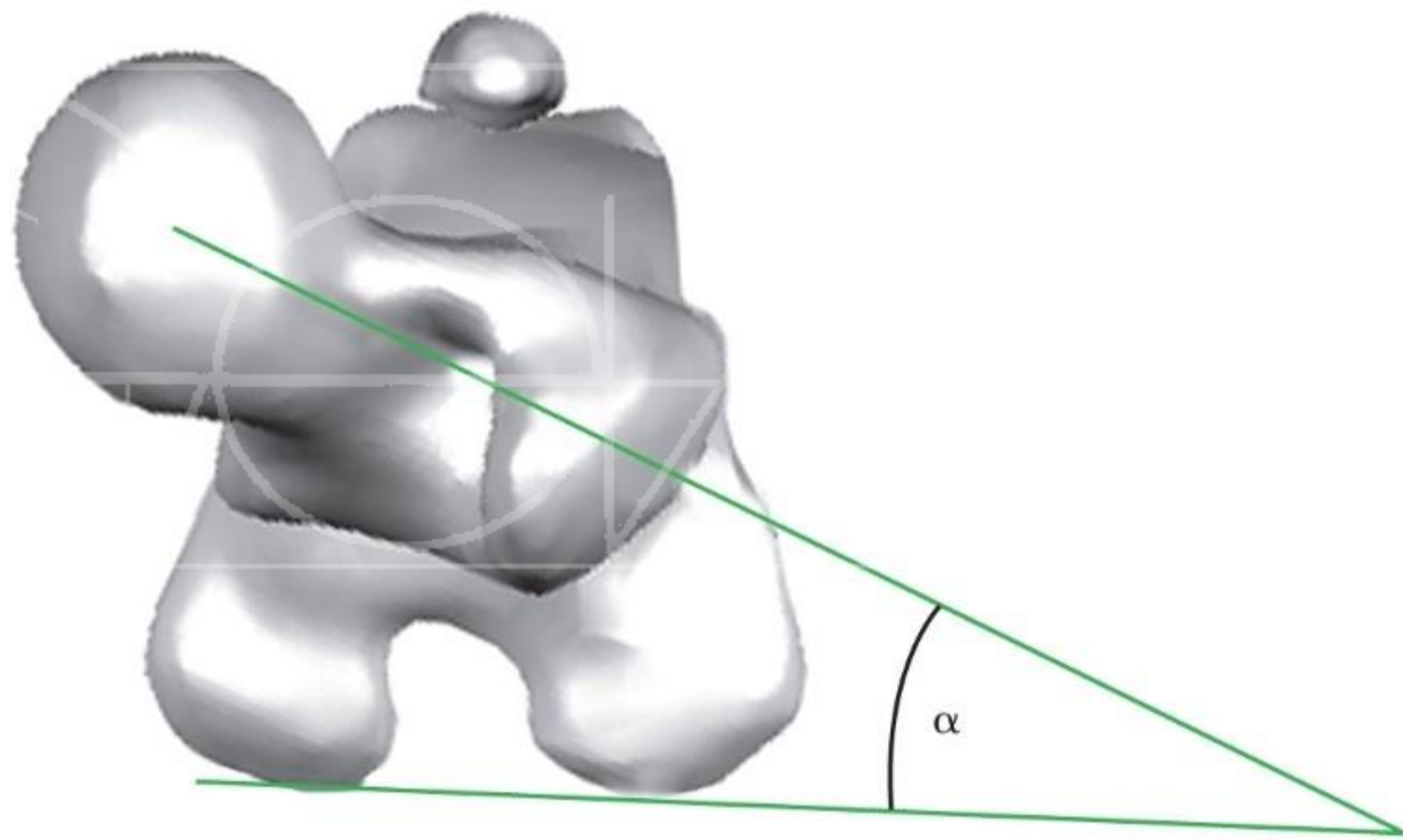
- 1- Calcular aLDFA
- 2- Calcular el aLDFA fisiológico
- 3- **Calcular angulo de corrección anatómico**



CALCULOS PRE CX

- 1- Calcular aLDFA
- 2- Calcular el aLDFA fisiológico
- 3- Calcular angulo de corrección anatómico
- 4- **Localizar osteotomía en el CORA**

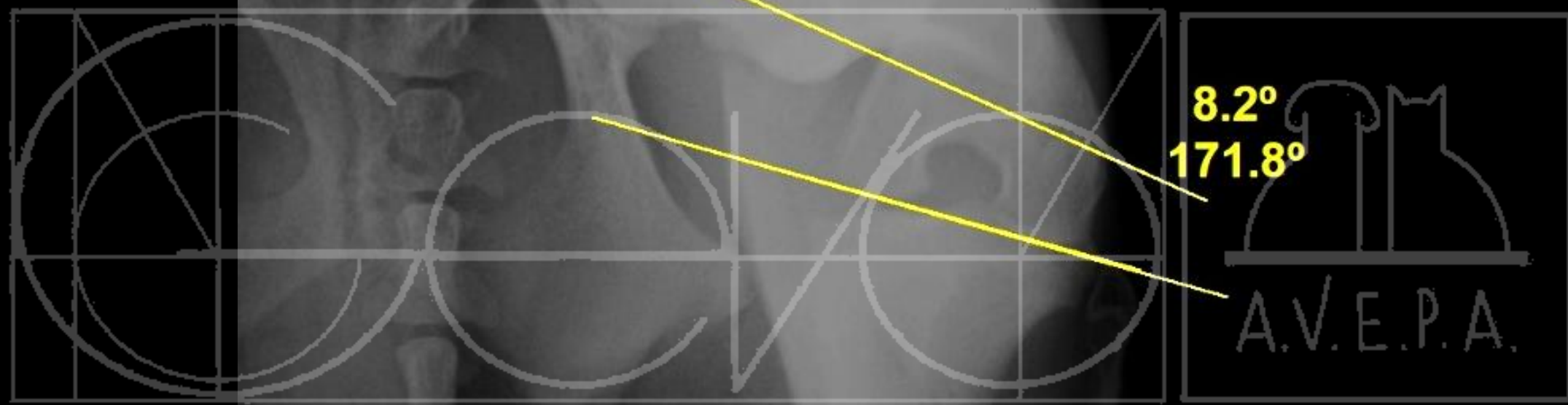


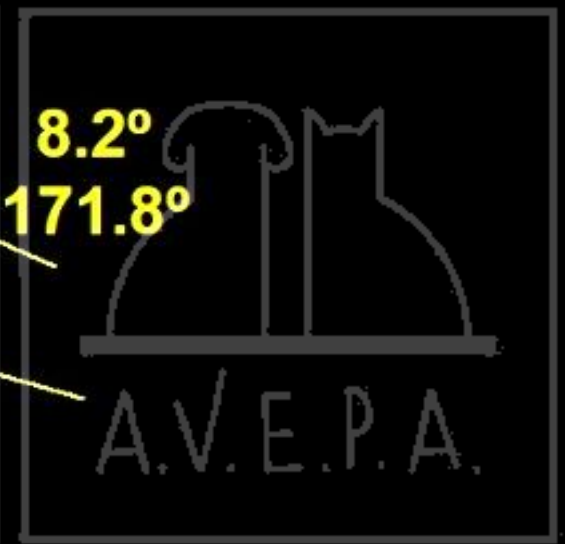
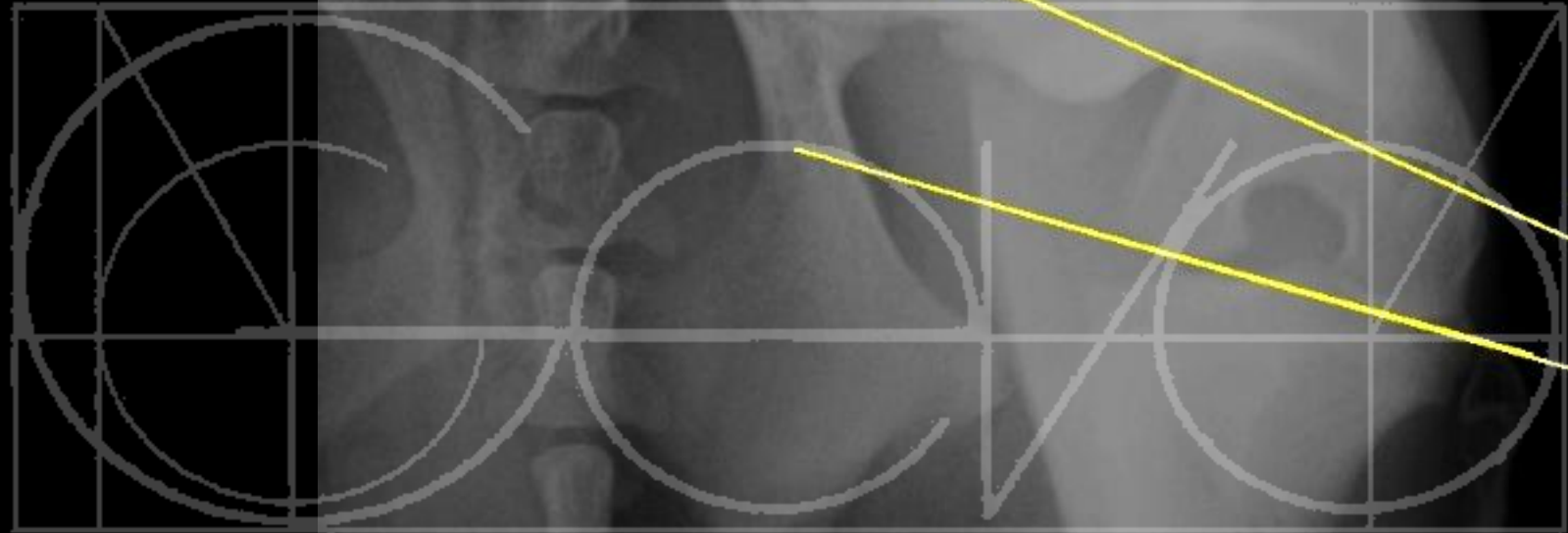


8.2°
171.8°



A.V.E.P.A.





$$25^\circ - 8,2^\circ = 16,8^\circ$$

$$2\text{PiR} - 360^\circ$$

$$X \text{ ----- } 16,8^\circ$$

99.28°

99.19°

mMPTA

93



mMDTA

96

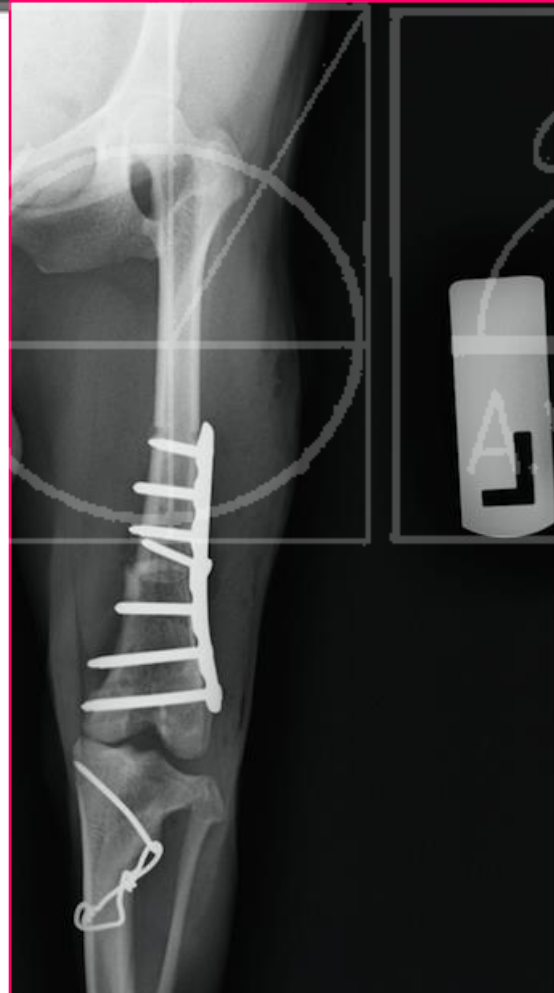
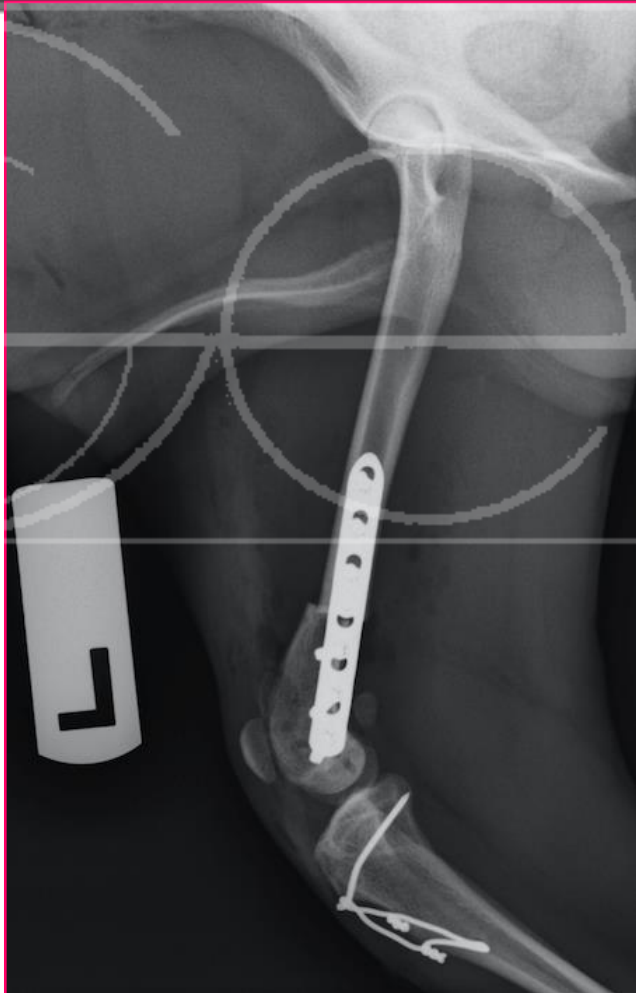
97.83°

98.04°

HACHIKO

SHIBA INU, 11 MESES

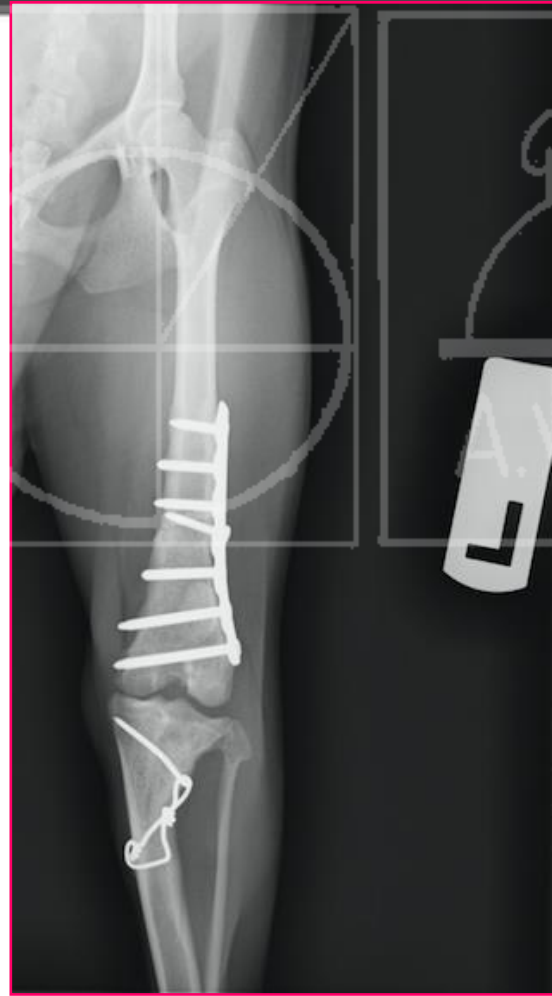
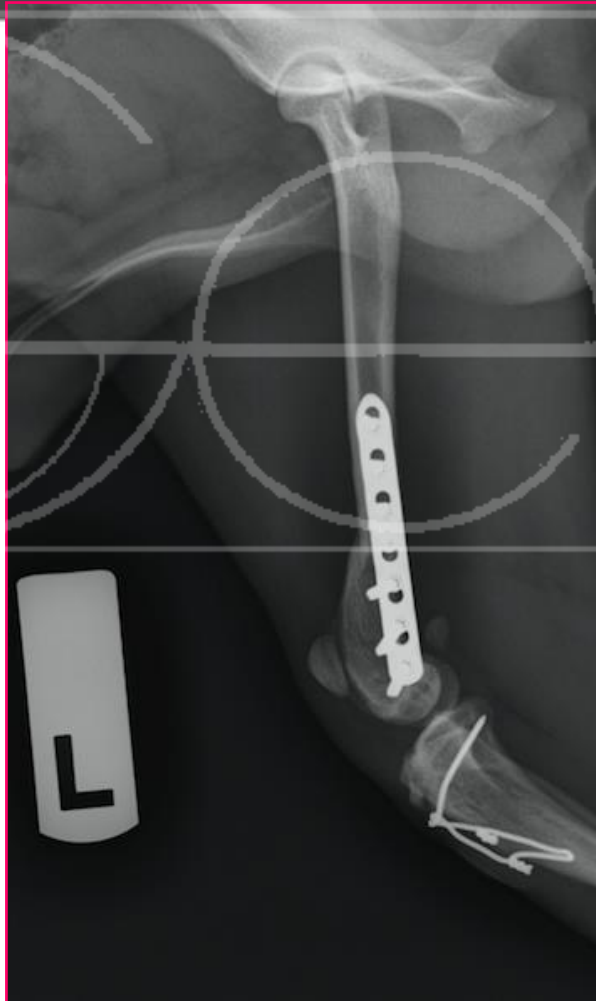
POST CX



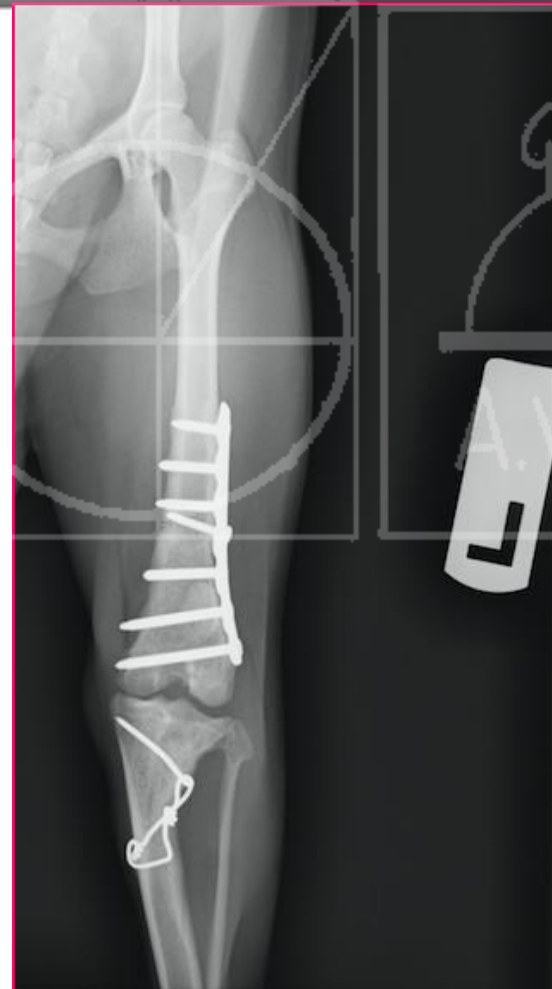
HACHIKO

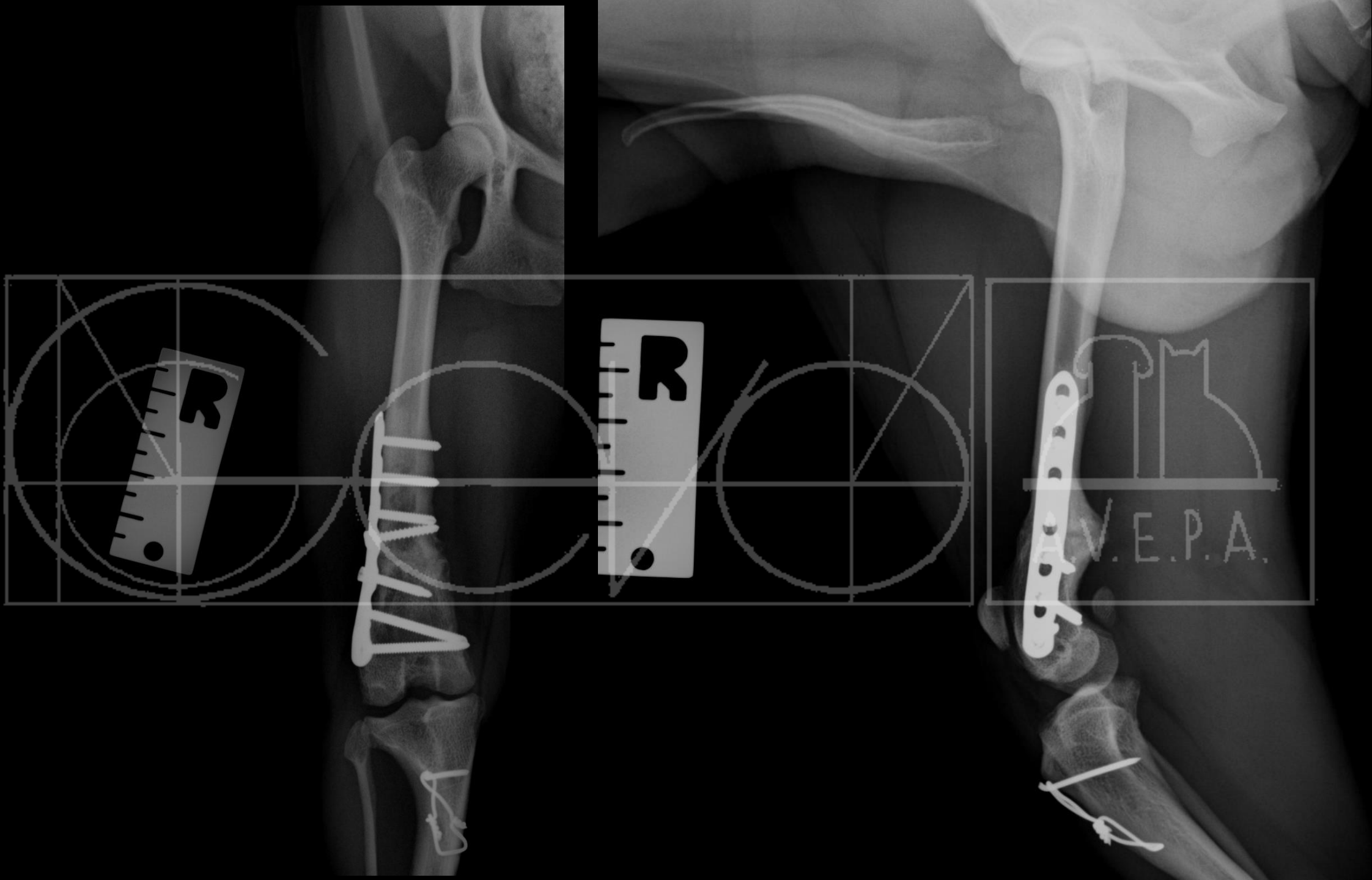
SHIBA INU, 11 MESES

2 MESES POST CX



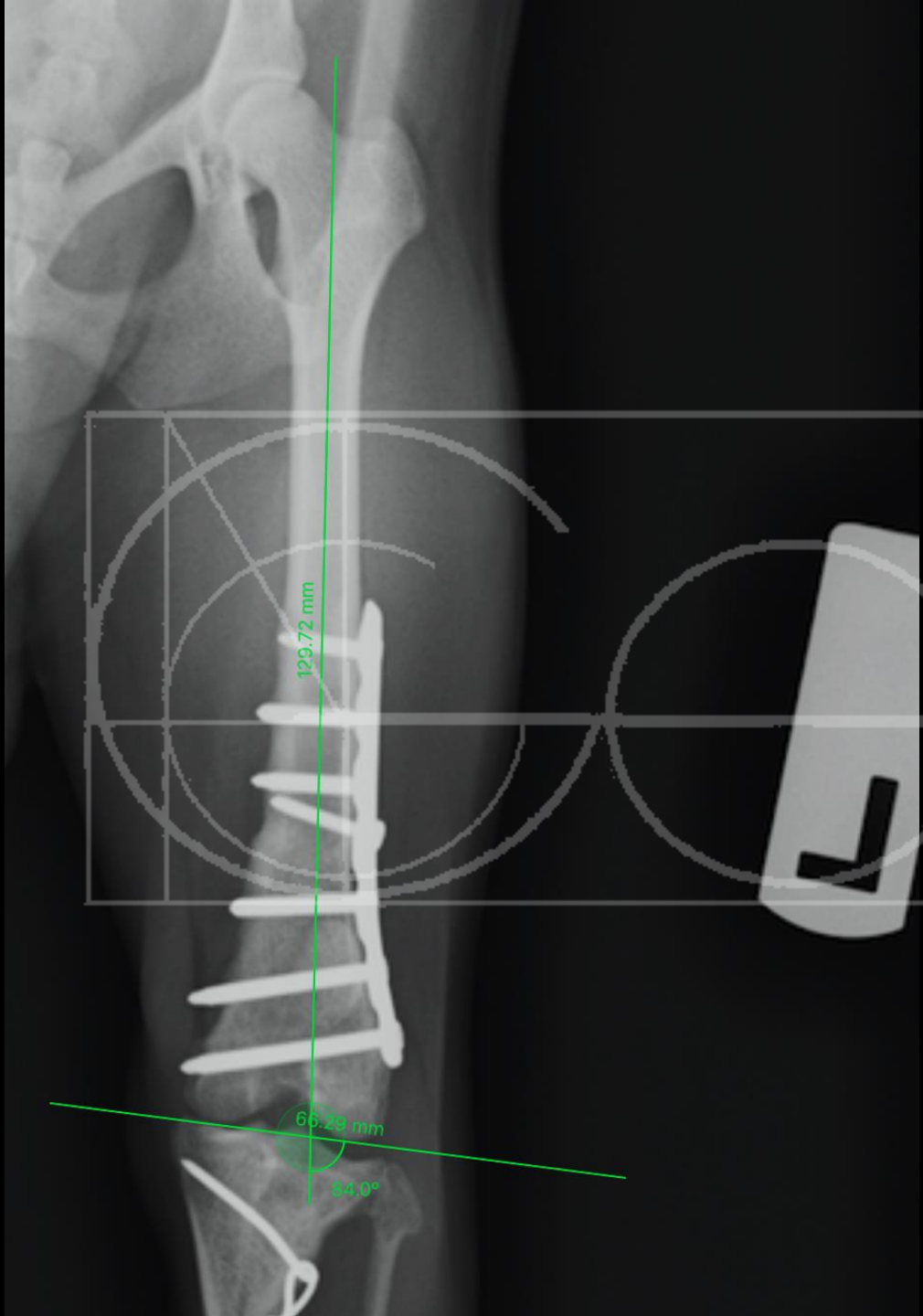
COMPARACIÓN RX AP pre - post FEMUR EPI

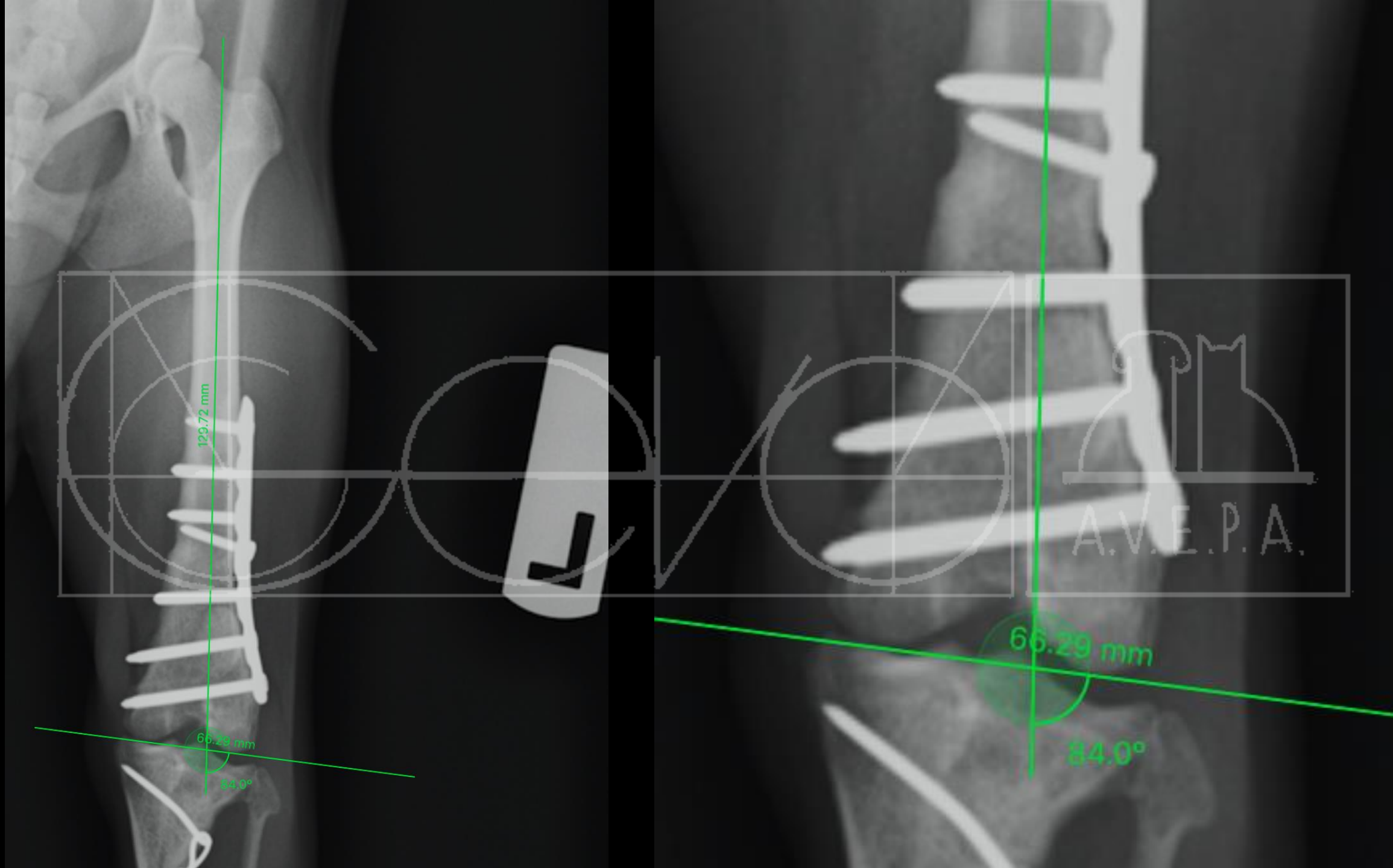


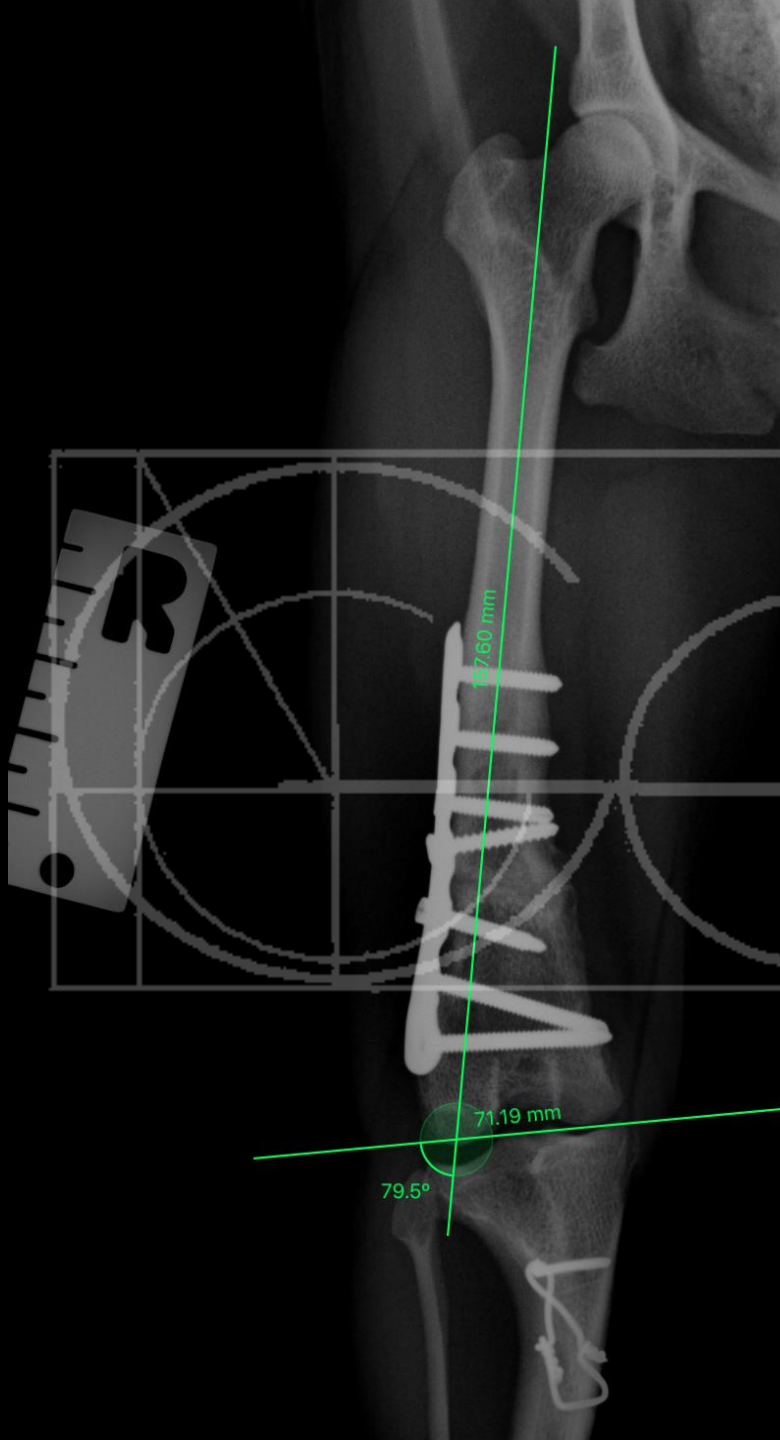


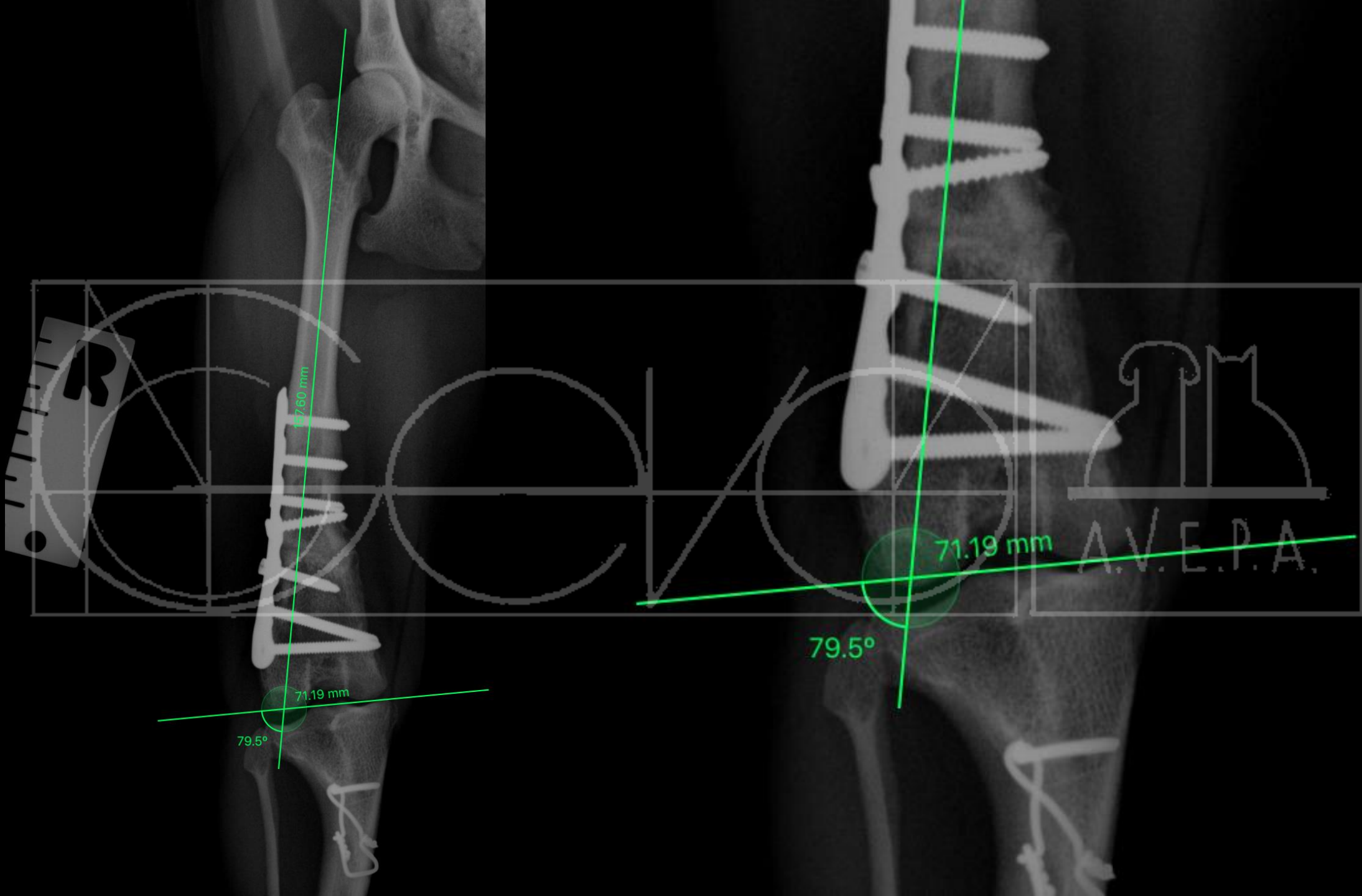
COMPARACIÓN RX AP pre - post FEMUR EPD

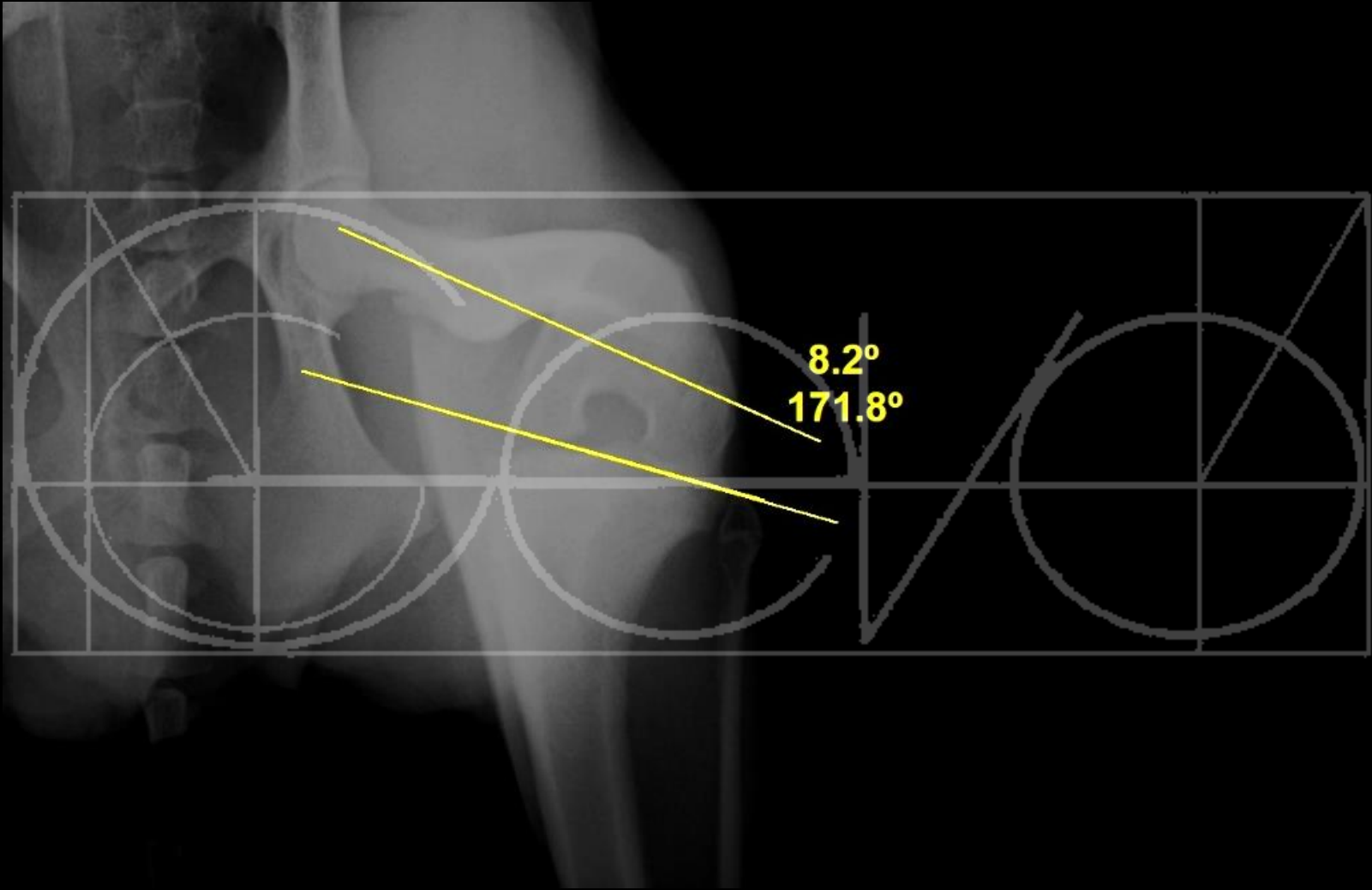


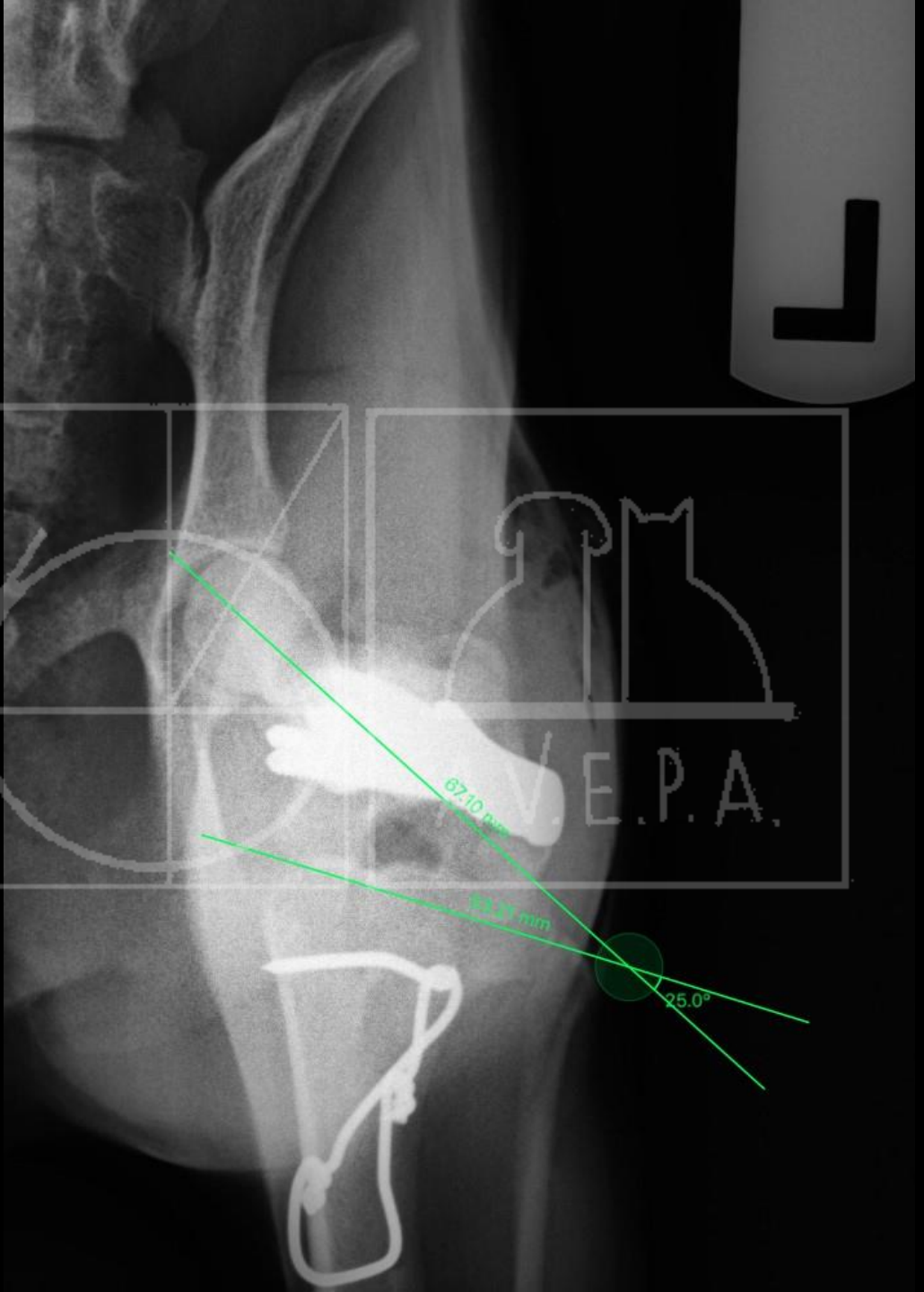
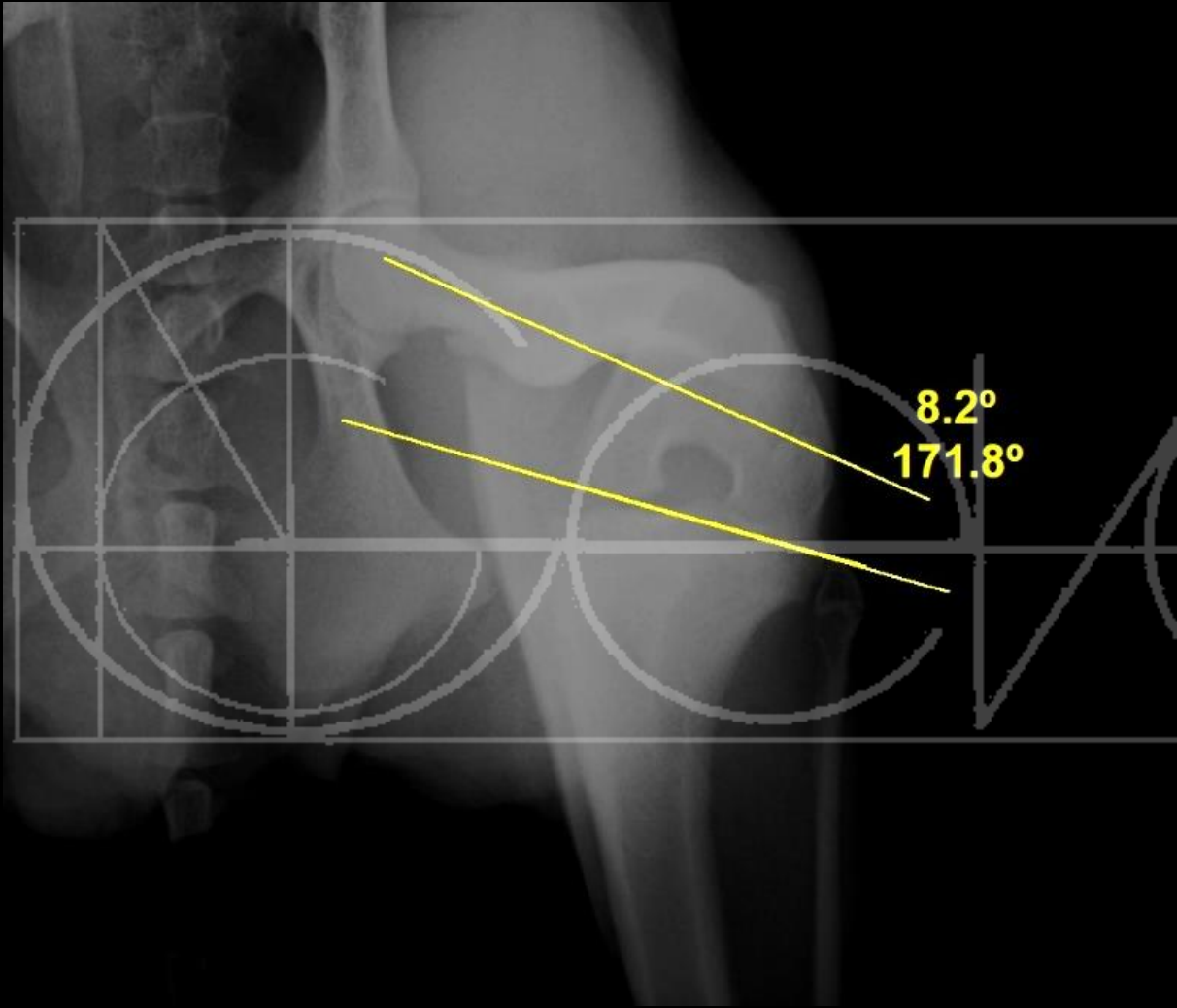


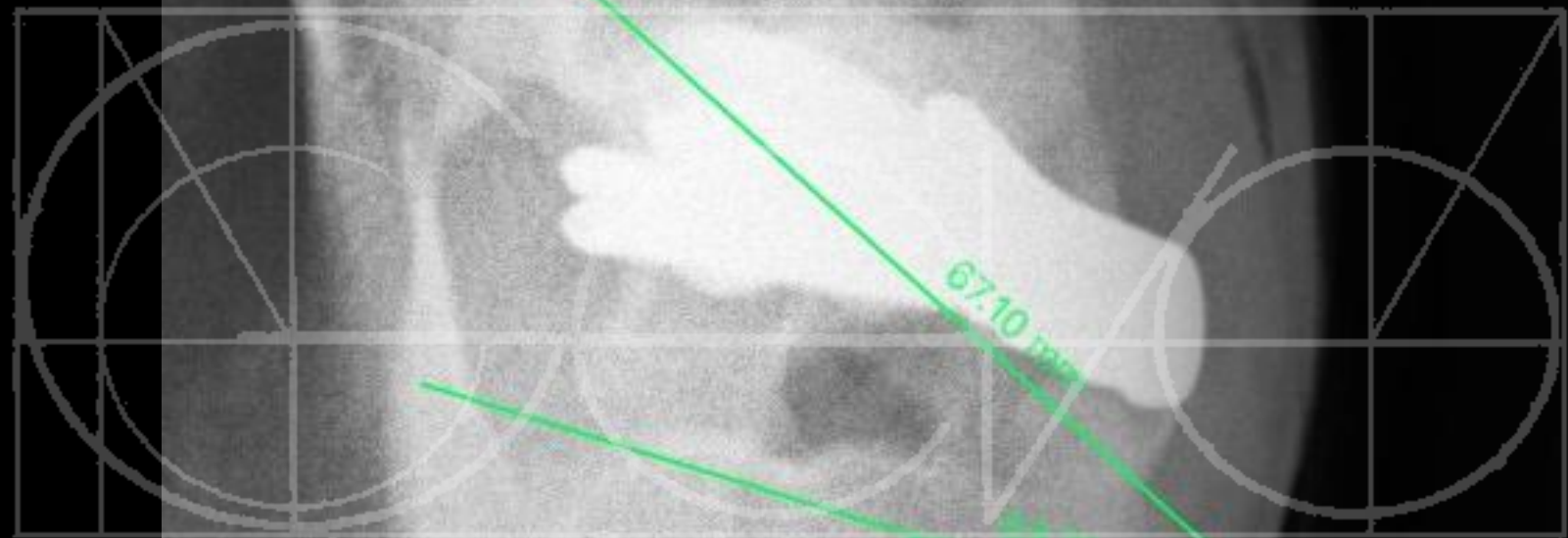












67.10 mm

104.29 mm

25.0°

HACHIKO

SHIBA INU, 11 MESES

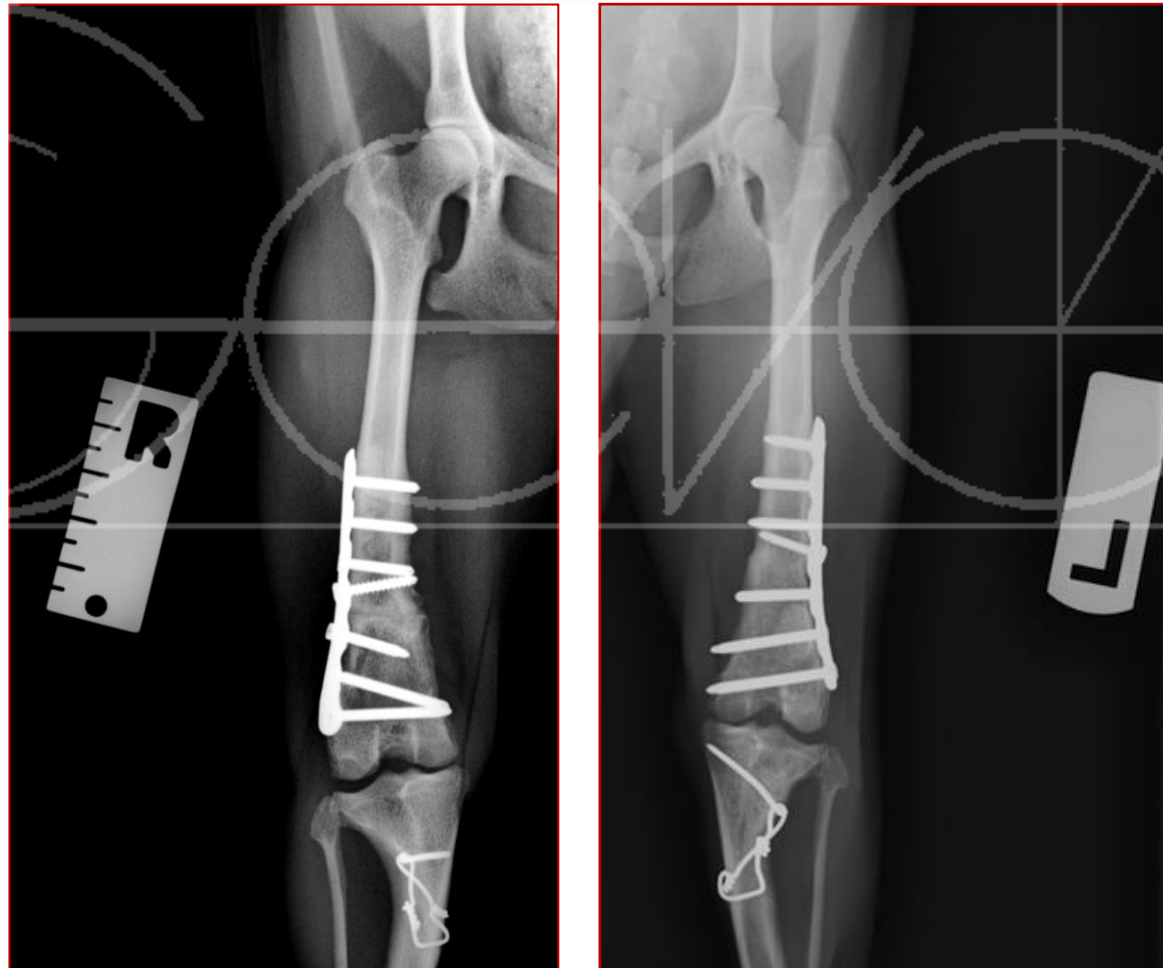


Criterios quirúrgicos lux. Rótula severa

- Desmotomía – capsulorrafia
- Taslación TT
- Sulcoplastia
- Valguización femoral
- Varización tibial



Corrección post operatorio



Gracias



Puchol
Hospital Veterinario

